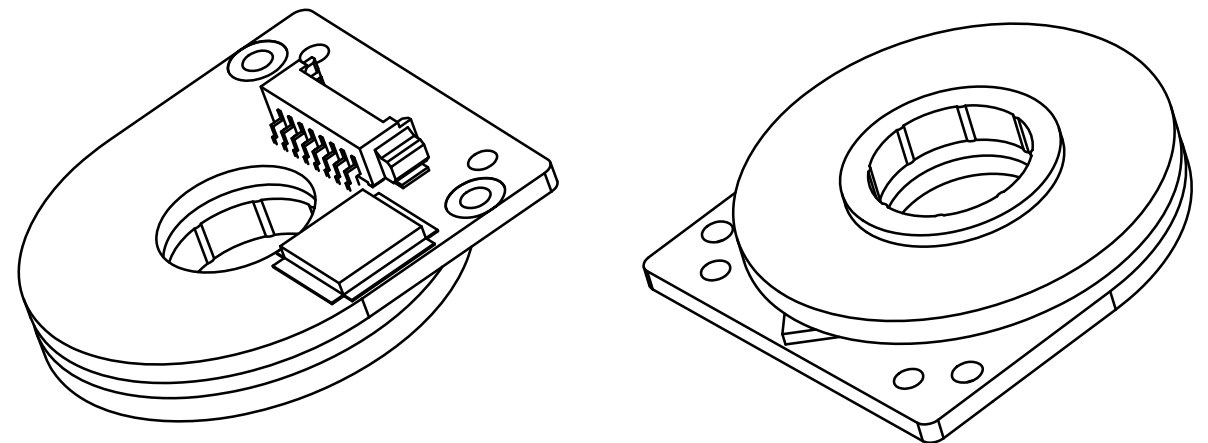
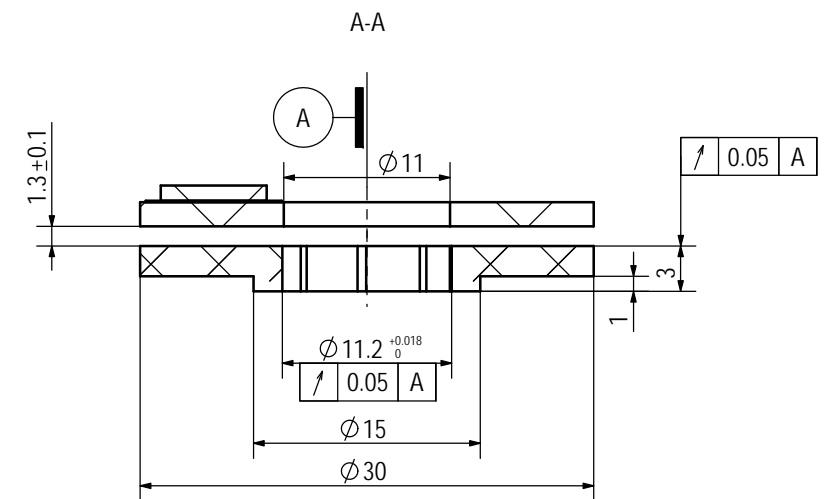
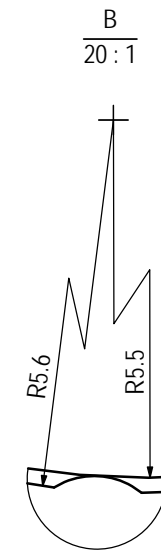




Recommended the axle installation size: $\phi 11 \text{ h}7_{-0.018}^0$



UNLESS OTHERWISE SPECIFIED: DIMENSIONS APPLY BEFORE COATINGS REMOVE ALL SHARP BURRS AND BREAK ALL SHARP EDGES		MODEL		DRAWG NO.		QTY.	SCALE	MATERIAL	SURFACE TREATMENT
		eCoder11		ZE-11-000-0					
UNSPECIFIED DIMENSIONAL TOLERANCE									
>0.5-3	±0.1	DRAWG	NAME	DATE	SIZE	VERSION		2:1	
>3-6	±0.1				A3		MATERIAL CODE		
>6-30	±0.2								
>30-120	±0.3	CHECK			PERSPECTIVE		<div>ZeroErr Control Co., Ltd 卓尔云控</div>		
>120-400	±0.5								
ANGULAR TOLERANCE:±1°		APPROV			THIRD ANGLE				

	MILLIMETERS
--	-------------